



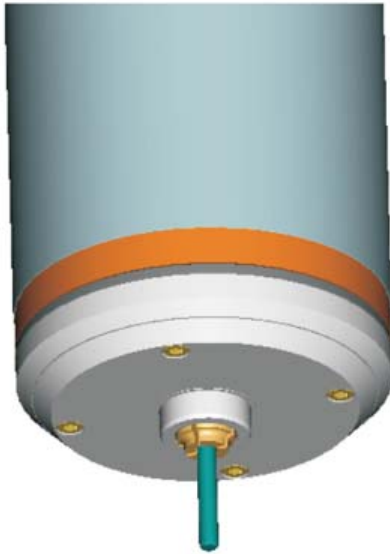
Bonded Collet Maintenance Instructions

** NOTE: NEVER CLOSE COLLET WITHOUT A
TOOL OR BLANK FITTED.*

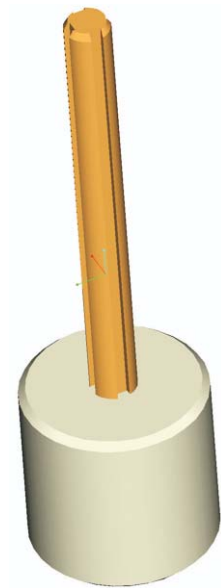
Spindles to be maintained every 24 hours



Tools and Components Required



Spindle



Cleaning Tool
Westwind part no. 45456



Brush
Westwind part no. 45296



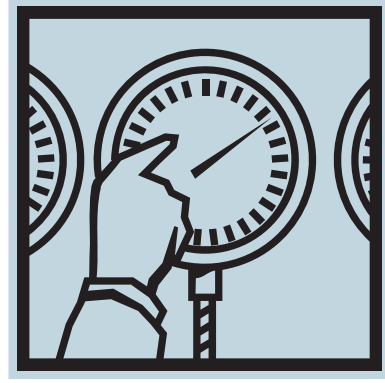
CRC 5-56 or
CRC Power Lube



Solvent
IPA alcohol or similar

PLEASE NOTE: ALTERNATIVE LUBRICANTS/SOLVENTS MUST BE APPROVED BY WESTWIND AS THESE COULD RESULT IN DAMAGE TO THE SPINDLE DURING OPERATION.

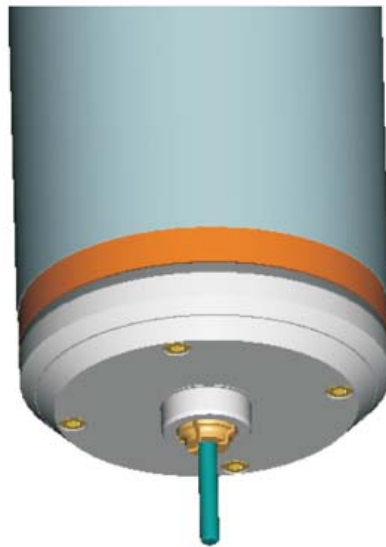
1



Standard operating pressure

Apply air pressure to collet actuation port

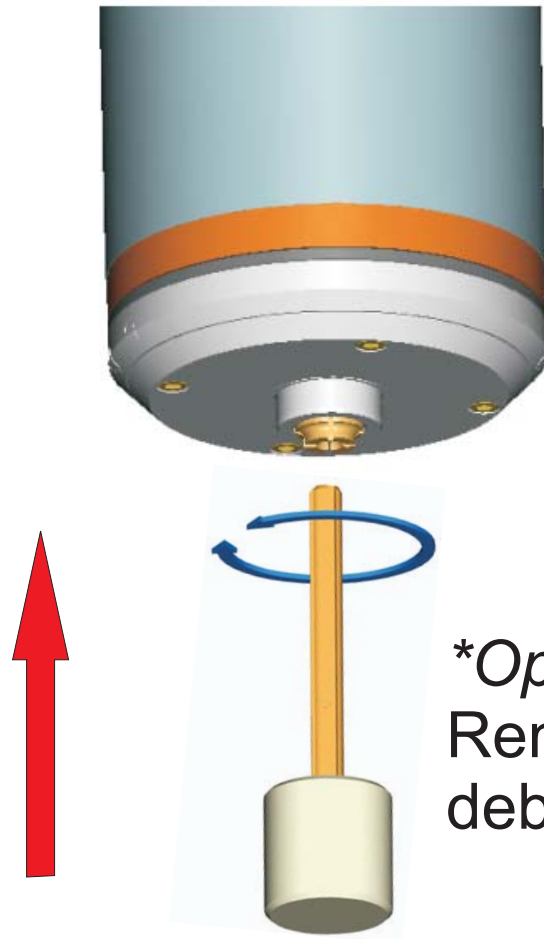
2



Remove tool

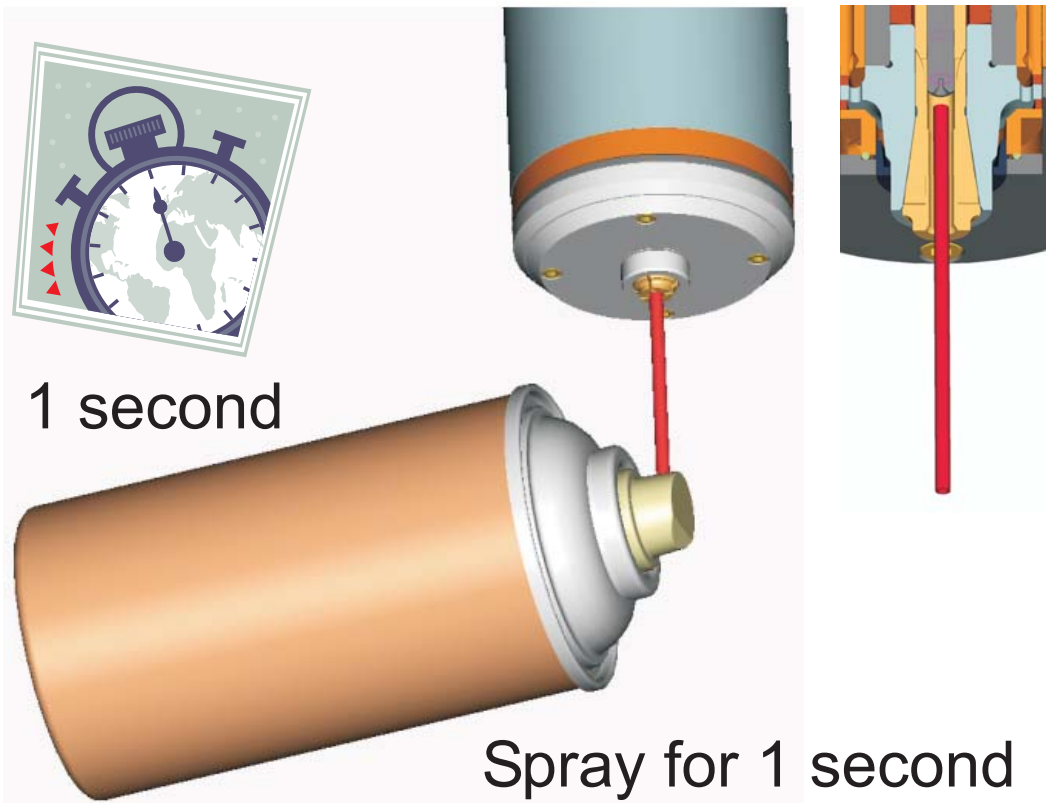


3



**Optional:*
Remove dust and
debris from collet bore

4

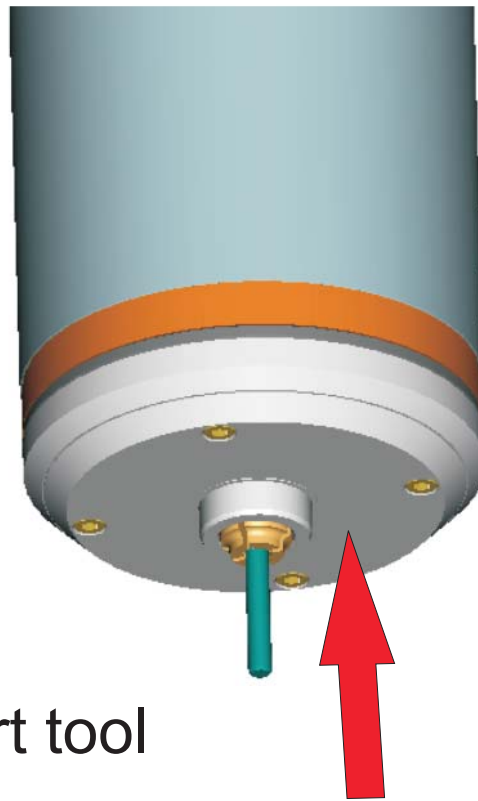


1 second

Spray for 1 second

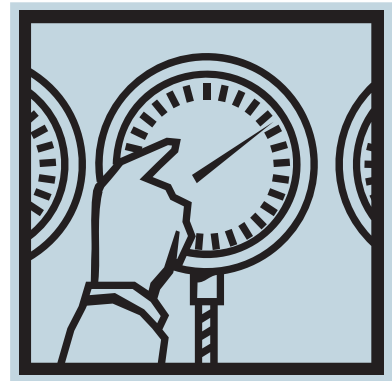
PLEASE NOTE: INCREASED SPRAYING COULD RESULT IN DAMAGE OCCURRING TO THE SPINDLE DURING OPERATION.

5



Insert tool

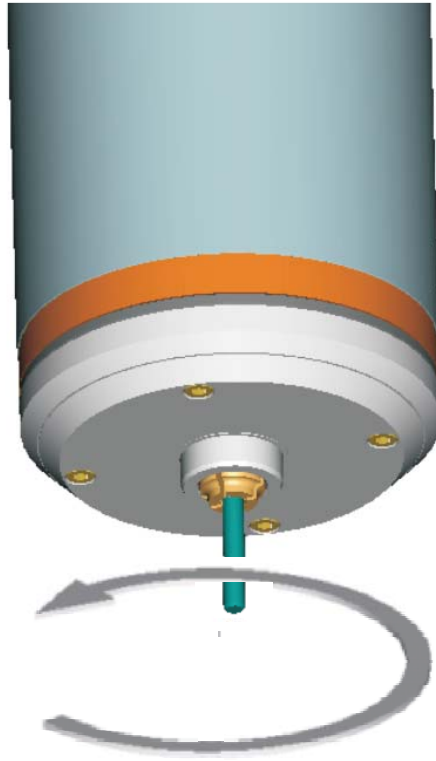
6



Standard operating pressure

Actuate the collet 10 times
with tool fitted in collet

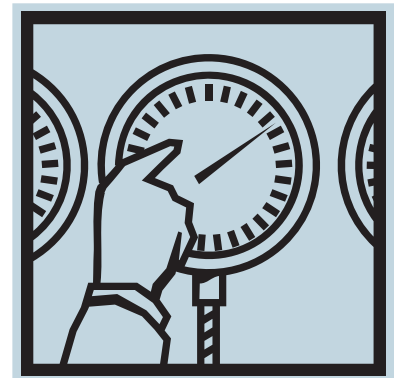
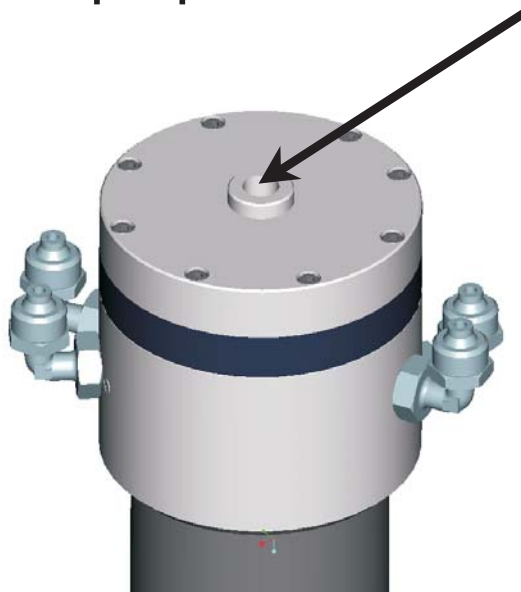
7



Run spindle to 100,000rpm for 1 minute

8

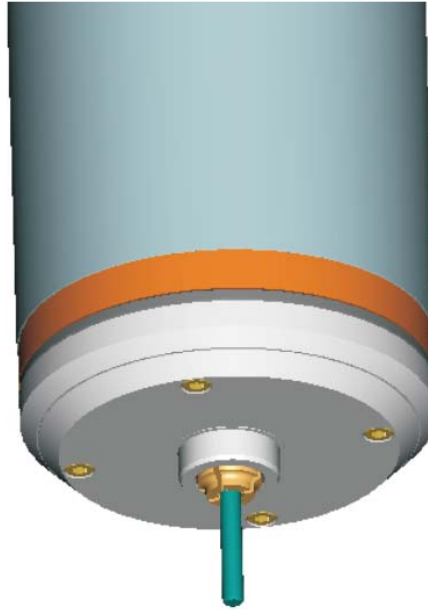
Stop spindle



Standard operating pressure

Apply air pressure to collet actuation port

9



Remove tool



10



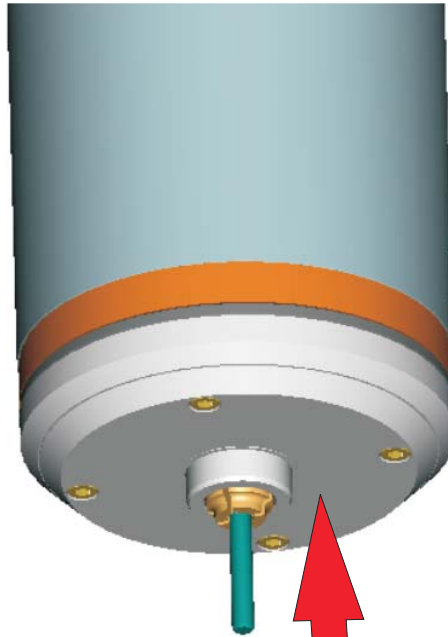
Dip brush cleaner
in solvent

11



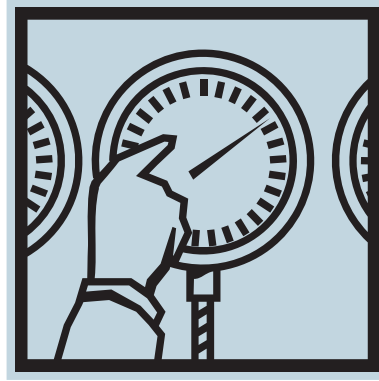
Clean collet bore

12



Replace tool

13



0 BAR (0 psi)

Remove air pressure from collet actuation port